

## Product Datasheet

Nov. 16 / Rev. 1.0

# SVI\_SMSG

## SMS Gateway

With the continued growth in A2P SMS the SVI\_SMSG offers a cost effective, feature rich, scalable and future proof carrier grade solution.



### FEATURES

- Scalable to 50,000 SMS/s
- SMPP support v3.4 to v5
- SS7 + SIGTRAN Interconnects
- Multiple SMS encoding formats
- USSD Gateway support
- Open Interface HTTP, SMPP, XML, SOAP, SQL support
- Comprehensive web based OA&M
- High Availability support

### BENEFITS

#### Feature Rich

Decades of global deployments and compliance to all major industry standards insures carrier grade performance from the start.



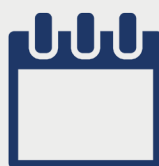
#### Scalable

Starting with support for 10 SMS/s the SVI\_SMSG scales all the way to 50,000 SMS/s guaranteeing support for heavy load A2P SMS applications.



#### Future Proof

Take advantage of Open Flow Service Logic to rapidly provision new features or seamlessly migrate to full SMSC



#### Cost effective

Low cost entry price with flexible license model allows clients to match growth with budget



# SVI\_SMSG

## Future Proof

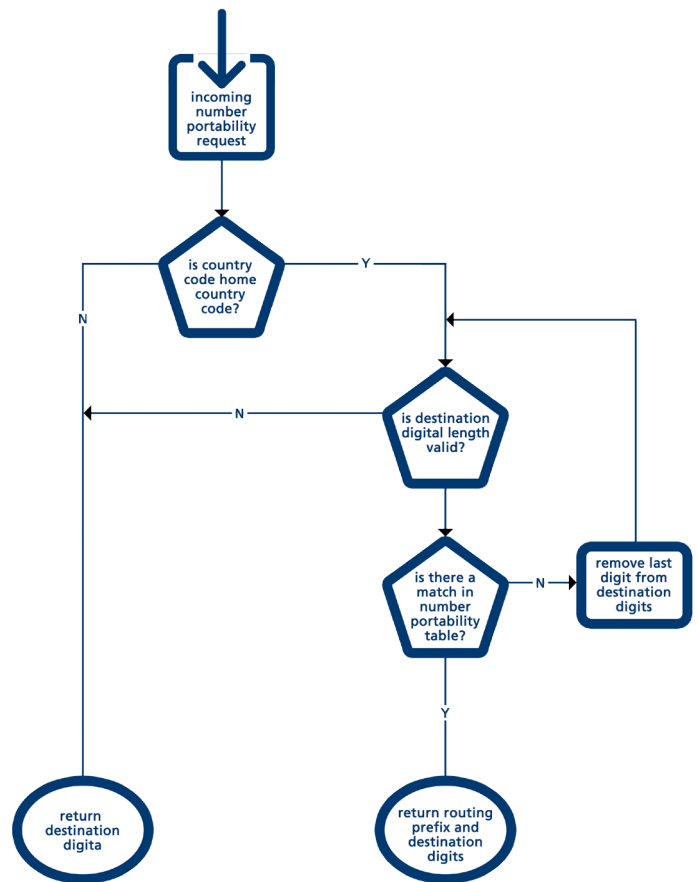
### Open Flow Service Logic

An entry level SVI\_SMSG can be licensed to deliver a low cost, carrier grade SMPP to SS7 / SIGTRAN gateway allowing clients to immediately tap into the cost savings of a GSM / Mobile / SS7 network. If a client then wishes to develop further value added services without resorting to the full functionality of an SMSC they can take advantage of Squire Technologies Open Flow Service Logic .

This technology allows clients or Squire Tech to simply provision, in real time, the detailed logic needed to deliver the value added service.

Off-the-shelf solutions include Store and Forward, LCR , Black List White List etc but Squire have helped and supported customers to develop complex routing , roaming, MNP and billing scenarios specific to their application requirements. Coupled with support for a range of open interfaces allows clients to integrate directly over their preferred technology – HTTP, SMTP,XML, SOAP, SQL.

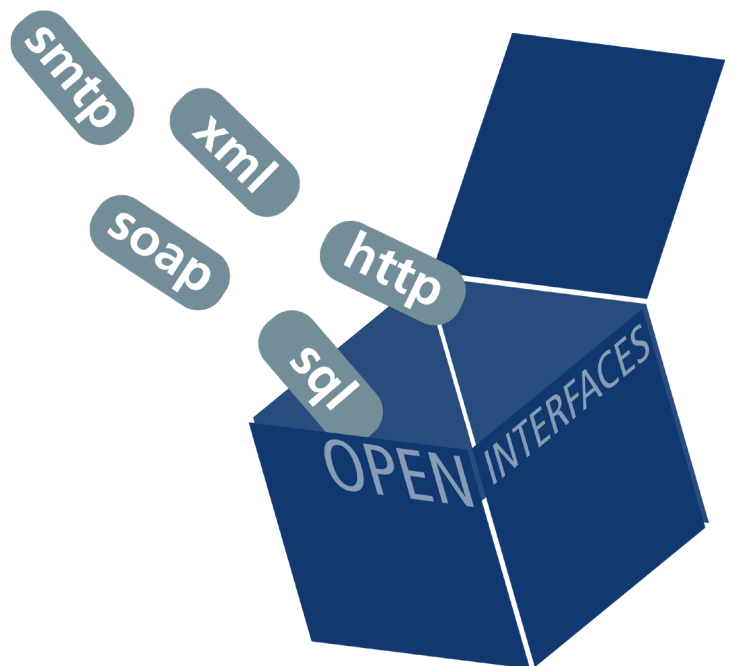
If clients find that they require the functionality delivered by a full SMSC then they can simply upgrade to the SVI\_SMSC whose functionality has been provisioned using Open Flow Service Logic.



### Open Interfaces

The SVI-SMSC’s Open Interfaces provides comprehensive support for a range of industry standard interfaces HTTP, SMTP, SOAP, SQL, XML. This allows ease of integration into clients OSS/BSS infrastructure with communication to the SVI-SMSC provided over our clients preferred interface(s).

Combining the Open Flow Service Logic and the Open Interfaces enables the SVI-SMSC to deliver a flexible, future proof solution driven by our customers evolving requirements.



# SVI\_SMSG

## Technical Specifications

### Physical Dimensions

#### Physical interfaces

- E1/T1 J1 (configurable)

#### Scaling

- 2 to 128 SS7 Signalling Links

#### Form Factor

- PCI

#### Chassis

- 1U Telco Standard

### SS7 Dimensions

- SS7 Signalling links - 128
- Originating Point Codes OPC - 32
- Destination Point Codes DPC - 1024
- Linksets - 128
- A - F SS7 link support

### SIGTRAN

- M2UA RFC 3331
- M3UA RFC 4666
- SUA RFC 3868
- M2PA RFC 4165

### Redundancy

- 1 + 1 Dual Plane worker/standby
- Automatic fail-over
- Single IP - VIP address

### Network Security

- Integrated Firewall
- Username, password protected
- Secure external protocols (SSH, SCP)
- Reports on unauthorised access

### Open Interfaces

- HTTP, SMPP, XML, SOAP, SQL

### MAP Specifications

- MAP 3GPP TS 23.040 v13.2.0
- MAP 3GPP TS 23.040 v13.5.0
- IS-41 TIA/EIA-42-D

### SMS

- Binary, Unicode, EuroCharacter IA5
- Concatenated
- Sender ID Masking
- Delivery Reports
- Alpha Numeric Addresses for MT SMS

### Diameter

- DCCA Realtime Charging
- RFC 4006

### SMPP

- SMPP v3.4 interface
- Up to v5.0

### OA&M

- Web based GUI and CLI interface
- Remote / Onboard configuration
- Real-time configurable log-files
- Detailed protocol debug
- Wireshark / Ethereal compatible
- Onboard CDRs
- Call Statistics
- Real-time traps and alarms

### Hardware Options

Chassis options depending on customer requirements

- Standard entry level chassis 1U Hardware High Availability chassis -48 DC and 240 AC

#### Environmental

- EN55022, EN55024, CISPR 22, 47 CFR 15 (ANSI C63.4: 1992)

#### Safety

- BSEN 60950
- EN41003: 1998
- IEC CB Scheme 1950 Third Edition

### Support



**Squire Technologies provides a range of post-sales support packages to meet client requirements and budget. These range from 6 months web and email support provided free of charge on all purchased products to dedicated 24/7 telephone support**